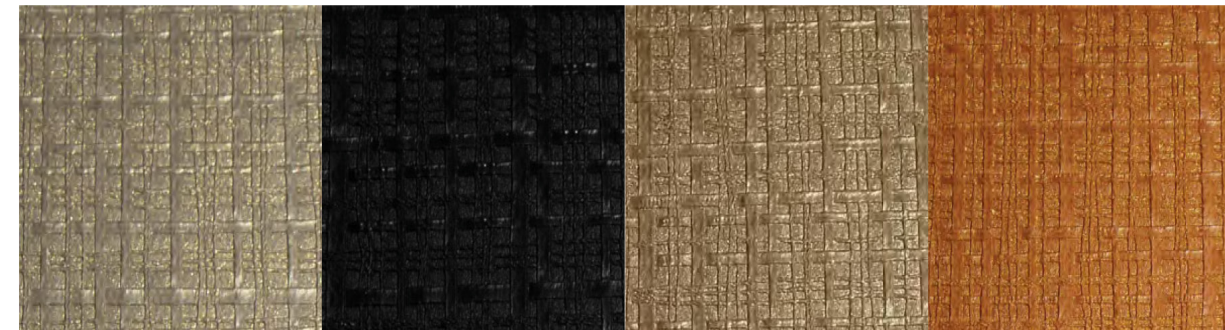


Cesta Pattern

Not recommended for use on a tackable surface. Tack holes will become visible over time.



Froggy | 44-710 Drizzle | 44-713 Simple Grey | 44-709 Beach | 44-711



Bronze | 44-706 Midnight | 44-712 Penny | 44-708 Fired Up | 44-707

Gem Pattern

Not recommended for use on a tackable surface. Tack holes will become visible over time.



Taupe | 44-700 Sepia | 44-702 Ganache | 44-704 Gold Dust | 44-703



Eggshell | 44-701 Sugar Cookie | 44-705

Actual color provided may vary from swatch shown due to dye lot variations. Room lighting may also change the color's appearance.

Silk Stria Pattern

Not recommended for use on a tackable surface. Tack holes will become visible over time.



Creamy | 44-716 Chamomile | 44-721 Lace | 44-718



Mist | 44-717 Fossil | 44-715

Acoustic
Accordion Partitions

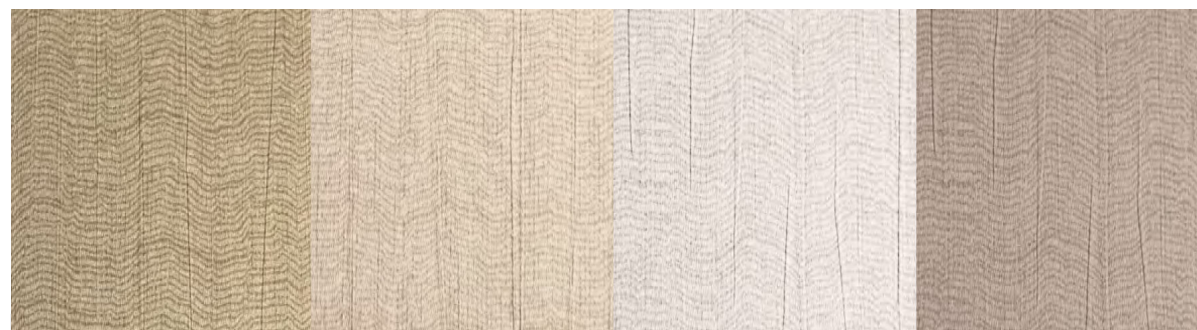


Terrain Pattern

Not recommended for use on a tackable surface. Tack holes will become visible over time.



Moss Brown | 44-728 Bark | 44-729 Seal | 44-730 Nickle | 44-731



Bluff | 44-734 Crepe | 44-733 White Sands | 44-732 Ash | 44-727

Actual color provided may vary from swatch shown due to dye lot variations. Room lighting may also change the color's appearance.

Armor Pattern

Not recommended for use on a tackable surface. Tack holes will become visible over time.



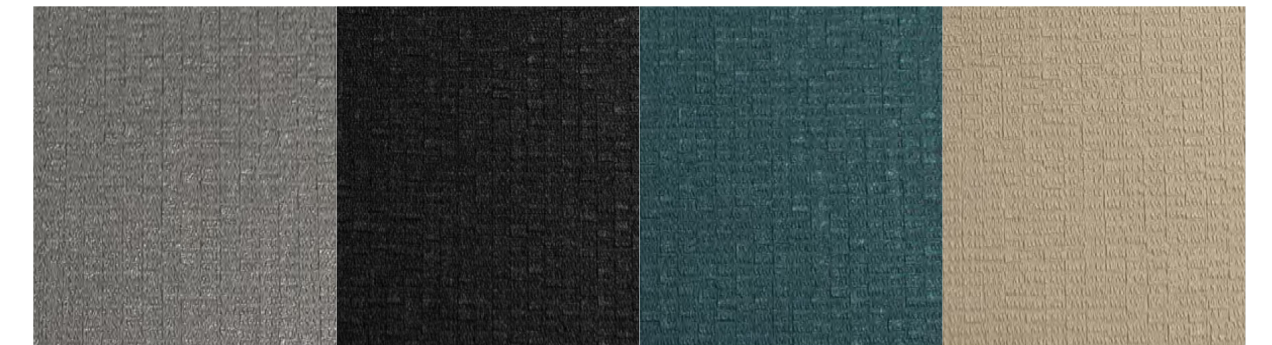
North | 44-736 Pure White | 44-735 Bone | 44-739



Typhoon | 44-740 Chelsea | 44-737 Black Sea | 44-738 Medieval | 44-741

Cascade Pattern

Not recommended for use on a tackable surface. Tack holes will become visible over time. Pattern is a random match.



Urban Grey | 44-723 Darkness | 44-725 Aqua | 44-724 Khaki | 44-726



Crisp | 44-742 Bunny Slope | 44-722

Actual color provided may vary from swatch shown due to dye lot variations. Room lighting may also change the color's appearance.